

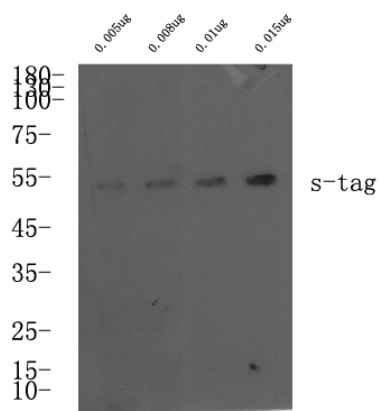


S-Tag Polyclonal Antibody

Catalog No	YP-Ab-04404
Isotype	IgG
Reactivity	Species independent
Applications	WB; ELISA
Gene Name	S Tag
Protein Name	S Tag
Immunogen	Synthetic peptide within S tag.
Specificity	Rabbit polyclonal to S tag
Formulation	Liquid in PBS containing 50% glycerol, and 0.02% sodium azide.
Source	Polyclonal, Rabbit,IgG
Purification	The antibody was affinity-purified from mouse ascites by affinity-chromatography using specific immunogen.
Dilution	WB 1:1000-5000, ELISA(peptide)1:5000-20000
Concentration	1 mg/ml
Purity	≥90%
Storage Stability	-20°C/1 year
Synonyms	KETAAAKFERQHMS tag antibody antibody S peptide antibody S peptide epitope tag antibody
Observed Band	
Cell Pathway	
Tissue Specificity	
Function	
Background	
matters needing attention	Avoid repeated freezing and thawing!
Usage suggestions	This product can be used in immunological reaction related experiments. For more information, please consult technical personnel.



Products Images



Western blot analysis of S-Tag fusion protein at 0.05-0.15ug, 4° over night, secondary antibody(cat: RS0002) was diluted at 1:10000, 37° 1hour.